

2-PC Full Port Ball Valve Flanged End



V2F-150LBS SIZE: 1/2" ~ 6"



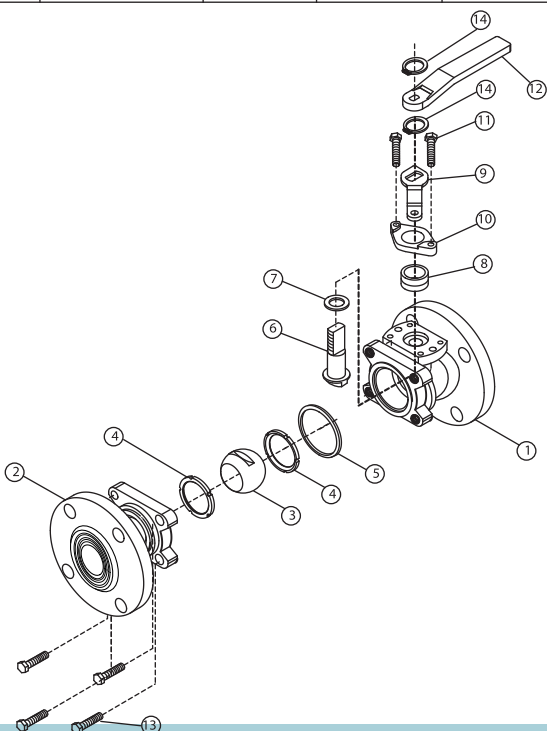
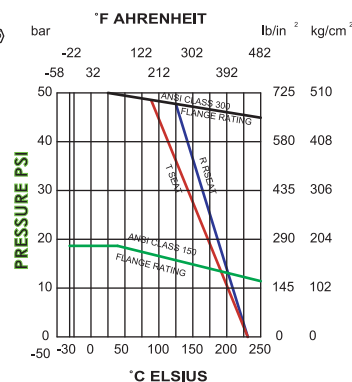
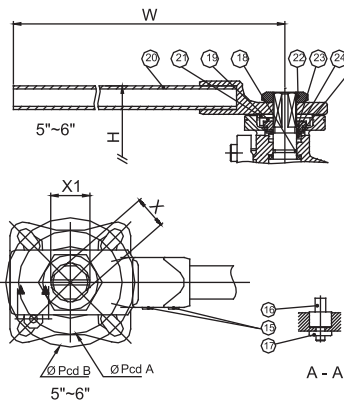
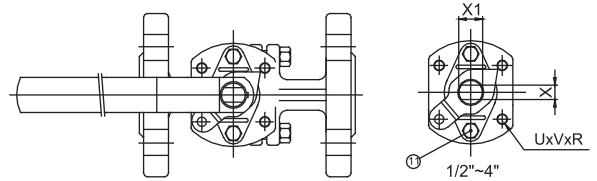
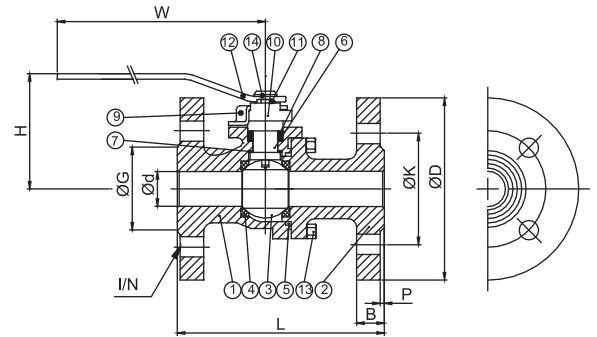
STAINLESS STEEL
 AISI-316 (DIN 1.4408) (ASTM-A351-CF8M)
 AISI-304 (DIN 1.4308) (ASTM-A351-CF8)
 CARBON STEEL
 S-45C (DIN 1.0619) (ASTM-A216-WCB)

- FEATURES:**
- *Flange: ANSI B16.5 Class 150
 - *Face to face: ANSI B16.10
 - *Pressure rating: 150LBS
 - *Investment casting body and cap
 - *Blow-out proof stem
 - *ISO 5211 mounting pad
 - *5" & 6" with ISO 5211 direct mounting pad
 - *Fire-safe design
 - *Anti-static device

- OPTION:**
- *Fixed handle
 - *Solid ball: 1/2" ~ 6"
 - *Hollow ball: 2-1/2" ~ 6"
 - *JIS 10k standard

MATERIALS LIST

ITEM	PARTS	QTY	MATERIALS		
			316	304	WCB
1	BODY	1	ASTM-A351-CF8M	ASTM-A351-CF8	ASTM-A216-WCB
2	CAP	1	ASTM-A351-CF8M	ASTM-A351-CF8	ASTM-A216-WCB
3	BALL	1	ASTM-A351-CF8M	ASTM-A351-CF8	ASTM-A351-CF8
4	BALL SEATS	2	PTFE	PTFE	PTFE
5	JOINT GASKET	1	Graphite	Graphite	Graphite
6	STEM	1	AISI 316	AISI 304	AISI 304
7	THRUST WASHER	1	PTFE	PTFE	PTFE
8	STEM PACKING	2	Graphite	Graphite	Graphite
9	STOPPER	1(1/2"-4")	AISI 304	AISI 304	AISI 304
10	GLAND RING	1	AISI 316	AISI 316	AISI 316
11	STOP BOLT	2(1/2"-4")	AISI 304	AISI 304	AISI 304
12	HANDLE	1	AISI 304	AISI 304	AISI 304
13	BOLT	(1/2"-2" x 4pcs) (2-1/2"-3" x 6pcs) (4" ~ 6" x 8pcs)	AISI 304 AISI 304 AISI 304	AISI 304 AISI 304 AISI 304	AISI 304 AISI 304 AISI 304
14	RETAINING RING	2(1/2"-4")	AISI 304	AISI 304	AISI 304
15	INSERT	2(5"-6")	WCB	WCB	WCB
16	STOP PIN	1(5"-6")	AISI 304	AISI 304	AISI 304
17	STOP NUT	1(5"-6")	AISI 304	AISI 304	AISI 304
18	O-RING	1(5"-6")	VITON	VITON	VITON
19	LOCK WASHER	1(5"-6")	AISI 304	AISI 304	AISI 304
20	HANDLE BAR	1(5"-6")	WCB+PAINT	WCB+PAINT	WCB+PAINT
21	SQUARE WASHER	1(5"-6")	AISI 304	AISI 304	AISI 304
22	HANDLE NUT	1(5"-6")	AISI 304	AISI 304	AISI 304
23	STEM NUT	1(5"-6")	AISI 304	AISI 304	AISI 304
24	B.V. WASHER	2(5"-6")	AISI 301	AISI 301	AISI 301
25	STEM RING	1(5"-6")	AISI 304	AISI 304	AISI 304



DIMENSIONS

NOMINAL SIZE	UNIT: mm																
	INCH	MM	d	ISO 5211 UxVxR	ANSI CALSS 150LBS ØL	ANSI CALSS 150LBS ØD	ANSI CALSS 150LBS ØK	ANSI CALSS 150LBS G	ANSI CALSS 150LBS B	ANSI CALSS 150LBS I/N	X	X1	P	H	W	TORQUE kgf-cm	KGS
1/2"	15	15	15	4-42xM5 xP0.8	108	89	60.5	35	11.2	16/4	8.6	M14x2.0	2	57	155	54	1.6
3/4"	20	20	20	4-42xM5 xP0.8	117	98	70	43	12.7	16/4	8.6	M14x2.0	2	61	155	78	1.94
1"	25	25	25	4-50xM6 xP1.0	127	108	79.5	51	14.3	16/4	10	M16x2.0	2	75	155	106	3.13
1-1/4"	32	32	32	4-50xM6 xP1.0	140	117	89	64	15.9	16/4	10	M16x2.0	2	81	155	150	3.96
1-1/2"	40	38	38	4-70xM8 xP1.25	165	127	98.5	73	17.5	16/4	12	M20x2.5	3	90	225	200	5.8
2"	50	50	50	4-70xM8 xP1.25	178	152	120.5	92	19.1	19/4	12	M20x2.5	3	100	225	290	8.03
2-1/2"	65	65	65	4-70xM8 xP1.25	190	178	139.5	105	22.3	19/4	12	M20x2.5	3	118	225	500	12
3"	80	80	80	4-102xM10 xP1.5	203	190	152.5	127	23.9	19/4	16	M27x3.0	3	135	325	770	17.89
4"	100	100	100	4-102xM10 xP1.5	229	229	190.5	157	23.9	19/8	16	M27x3.0	3	148	325	1100	27.71
5"	125	125	PCD A	F10/102	356	254	216	186	23.9	22/8	27	M32x2.0	3	200	530	1500	49
			PCD B	F12/125													
6"	150	150	PCD A	F10/102	394	279	241.5	216	25.4	22/8	27	M32x2.0	3	215	530	1800	60
			PCD B	F12/125													